

PRODUCT SPECIFICATION

LAMP CURRENT: 6.2A

IGNITOR VOLTAGE (MIN.): 4KV

LUMINAIRE RATING: ENCLOSED

BURNING POSITION: UNIVERSAL

PERFORMANCE DATA

LIGHT OUTPUT (LUMENS @ 100 HOURS): 55,000

LAMP LUMENS PER WATT: 92

RATED LIFE (HOURS @ 10 HR. /START): 12000V / 9000H

CORRELATED COLOUR TEMPERATURE: 4000K

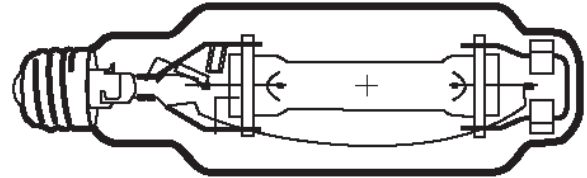
CHROMATICITY (CIE - X,Y): 385, 390

COLOUR RENDERING INDEX (CRI): 68

TYPICAL WARM UP TIME: 3 - 5 MINUTES

TYPICAL HOT RESTART TIME: 5 - 10 MINUTES

BURNING POSITION: UNIVERSAL



PHYSICAL DATA / REQUIREMENTS

BASE DESIGNATION: E40

BULB DESIGNATION: T76

BULB DIAMETER: 76MM

MAX. OVERALL LENGTH: 283MM

LIGHT CENTRE LENGTH: 175MM

EFFECTIVE ARC LENGTH: 52MM

MAX. BASE TEMPERATURE (°C): 250

MAX. BULB TEMPERATURE (°C): 525

LUMINAIRE TYPE: ENCLOSED

SOCKET PULSE RATING (KV): 4~5

MERCURY CONTENT: 32.0mg

LAMP ELECTRICAL DATA / REQUIREMENTS

IEC STANDARD: -

LAMP WATTAGE (W): 600

LAMP OPERATING VOLTAGE (V): 110

LAMP OPERATING CURRENT (AMPS): 6.2

MIN. OPEN CIRCUIT VOLTAGE (RMS): 230

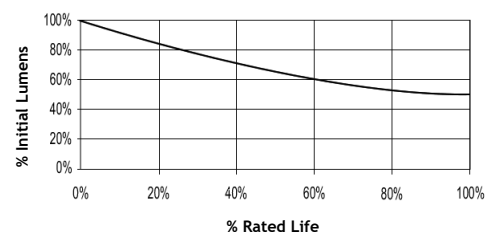
MIN. STARTING PULSE (PEAK V): 4000 -5000

MIN. PULSE WIDTH AT 2700V (MICROSECONDS): 2

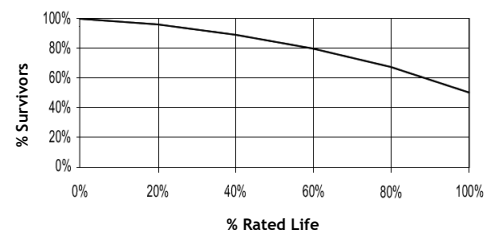
MIN. PULSE RATE PER 1/2 CYCLE: 1

PULSE POSITION (ELECTRICAL DEGREES): 60-90, 240-270

Lumen Maintenance



Lamp Mortality



Notes: This Product Specification contains data about typical performance at nominal power. Actual values may depend on ballast and applications. Complies with (CE), Low Voltage (CE), WEEE and RoHS Directives.